

SOS15 FILTERCAKE ANALYSIS

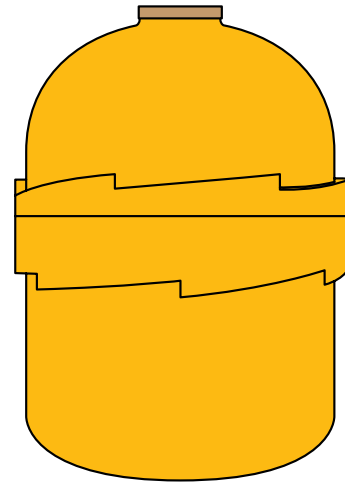
CENTRIFUGAL OIL FILTRATION (COF) NON-CAT ROTOR SAMPLING INSTRUCTION

The following are specific tools and equipment required to complete the task:

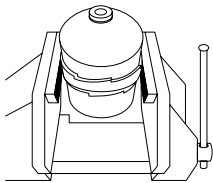
- 1 x Drain trolley
- 1 x Workshop vice
- 1 x 51mm hole saw bit and drill
- 1 x Reciprocating saw with medium/fine coarse blade
- 1 x Hammer
- 1 x Small flat blade prybar
- 1 x Spatula

Specific PPE required for the task:

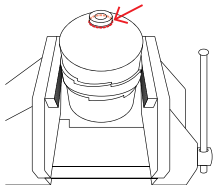
- Hearing protection when using tools to cut.
- Gloves and safety glasses to be worn at all times.



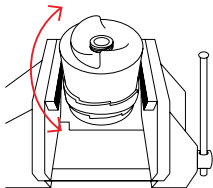
INSTRUCTIONS



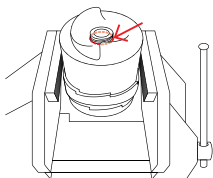
1. Place COF on an oil drain bench/trolley allowing surplus residual oil to drain out for 30 mins. Place COF in upright position in vice and secure as shown. Wipe down COF to ensure the hole saw does not slip on the COF shell.



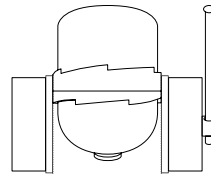
2. Using a 51mm hole saw, cut the COF shell approximately to 15mm depth around the top bushing.



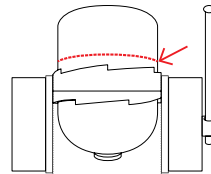
3. Remove COF from vice and rotate COF upside down and secure in vice.



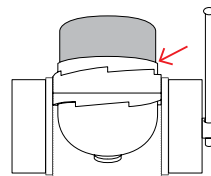
4. Wipe down COF to ensure the hole saw does not slip on the COF shell and using a 51mm hole saw, drill approximately 5-10mm.



5. Remove COF from vice and place horizontally and secure in vice as shown; wipe down COF to ensure the reciprocating saw does not slip on the COF shell.



6. Using reciprocating saw cut around the entire circumference of the COF to a depth of 5mm.



7. Using a hammer and small flat blade prybar, tap around the cut and separate the two halves exposing the filtercake.

8. Using a clean spatula, carefully extract the filtercake segments keeping as whole segments if possible. Do not use a scraper or any instruments that will introduce contaminants into the filter cake. Place extracted filtercake into supplied SOS15 bag.

9. Create sample label and place filtercake sample into SOS15 box and seal in prepaid mailing satchel.



Condition Monitoring Centre
Fluid Analysis Laboratory

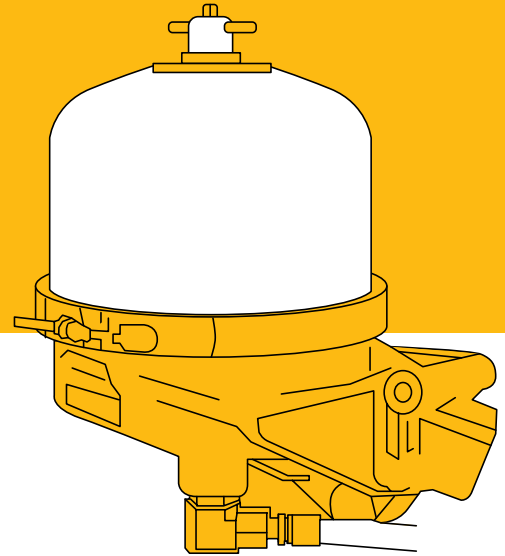
CALL 131 228
HASTINGSDEERING.COM.AU

Hastings Deering



SOS15 FILTERCAKE ANALYSIS

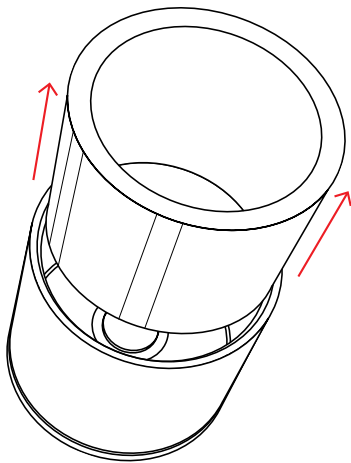
CENTRIFUGAL OIL FILTRATION (COF)
CAT ROTOR SAMPLING INSTRUCTION



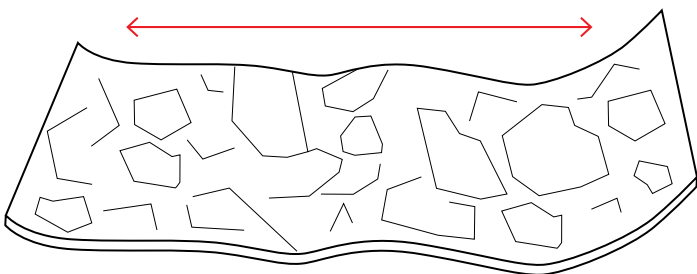
Specific PPE required for the task:

Gloves and safety glasses to be worn at all times.

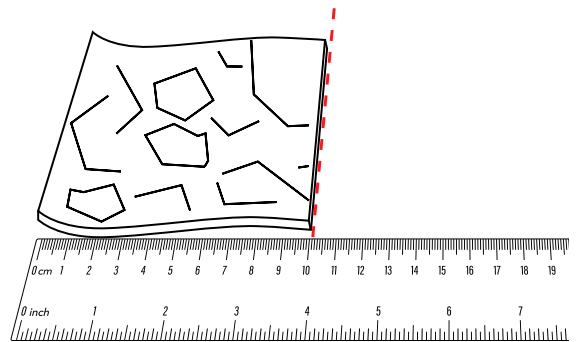
INSTRUCTIONS



1. Remove used COF filter paper from unit per Caterpillar Operation and Maintenance Manual instructions.



2. On a clean bench, cut vertically down to open up the filter.



3. Measure horizontally 10cm along the cake and make an additional vertical cut.
4. Insert the 10cm by 10cm COF segment into the sample bag provided ensuring it remains in one piece.
5. Place the sample bag containing the filter, flat in the bottom of the SOS15 box.
6. Ensure all relevant information is included on sample label and placed in the SOS15 box.
7. Seal box and place into mail satchel.



Condition Monitoring Centre
Fluid Analysis Laboratory

CALL 131 228
HASTINGSDEERING.COM.AU

Hastings Deering

